

# User's Manual

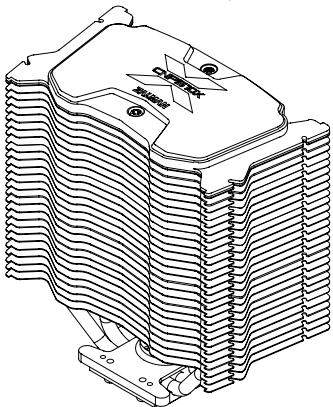
## CNPS10X Flex

Intel Socket 1366/1156/775 CPU

- Core i7
- Core i5
- Core 2 Quad
- Core 2 Duo
- Core 2 Extreme
- Dual Core Pentium
- Pentium D
- Pentium 4
- Celeron D

AMD Socket AM3/AM2+/AM2/754/939/940 CPU

- Phenom II
- Phenom
- Athlon II X2
- Athlon
- Athlon 64
- Athlon X2
- Athlon 64 X2
- Athlon FX
- Athlon 64 FX
- Opteron
- Dual-Core Opteron
- Sempron



To ensure safe and easy installation,  
please read the following precautions.

<http://www.zalman.com>

## 1. Precautions

- 1) **This cooler must be used with a 120mm fan.**
- 2) Do not ingest the Thermal Grease, and avoid its contact with skin and eyes. If contact is made with skin, wash off with water. If ingested or irritation persists, seek medical attention.
- 3) To prevent possible injuries, gloves must be worn while handling this product.
- 4) Excessive force exerted on the fan may cause damage to the fan and/or system.
- 5) Use and keep product away from reach of children.
- 6) Check the components list and condition of the product before installation. If any problem is found, contact the retailer to obtain a replacement.
- 7) During transportation of the system, the cooler must be removed. Zalman is not responsible for any damages that occur during the transport of a system.
- 8) Product design and specifications may be revised to improve quality and performance.

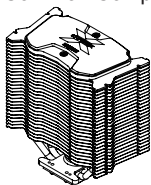
Disclaimer) Zalman Tech Co., Ltd. is not responsible for any damages due to external causes, including but not limited to, improper use, problems with electrical power, accident, neglect, alteration, repair, improper installation, or improper testing.

## 2. Specifications

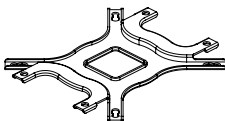
Spec.		Model	CNPS10X Flex
Material		Pure Aluminum and Copper	
Weight		700g	
Dimensions		133(L) X 74(W) X 149(H)mm	
Thermal Grease (ZM-STG2)	Contents	3.5g	
	Thermal Range	-40°C ~ +150°C (-40 ~ +302°F)	

### 3. Components

#### 1) Common Components



Cooler



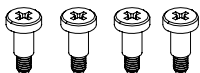
Backplate



User's Manual



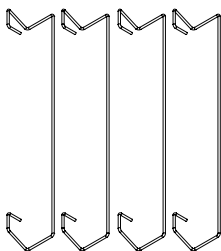
Side Caps



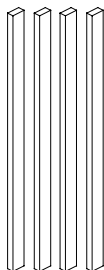
Bolts



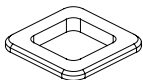
Nuts



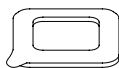
Fan Fixing Clips



Vibration Pads



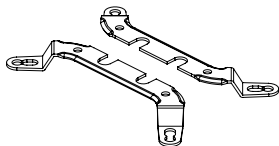
Loading Block

Thermal Grease  
(ZM-STG2)

Double-Sided Tape

#### 2) Intel Components

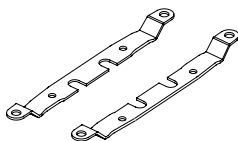
Socket 775/1156/1366



Intel Clips

#### 3) AMD Components

Socket AM3/AM2+/AM2/754/939/940



AMD Clips

※ 120mm Fan is not included and must be purchased separately.

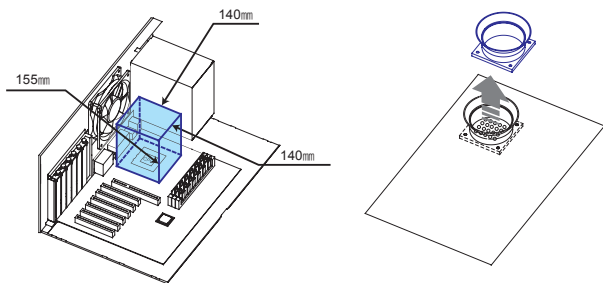
## 4. Installation Requirements

### 1) Space Requirements

The cooler's installation requires unobstructed space with dimensions of 140mm(width), 140mm(length), 155mm(height), and the CPU as a central reference point. Please check if components such as ODDs and PSU protrude into the required space.

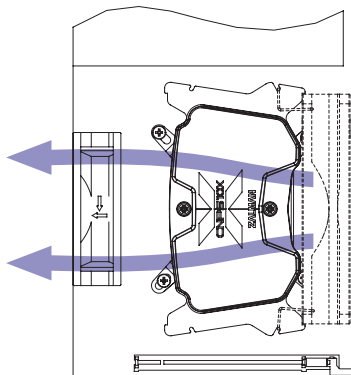
### 2) Air Guide Removal

Air guides on enclosures must be removed, before the cooler's installation, for they protrude into the cooler's required space.



### 3) Cooler Orientation

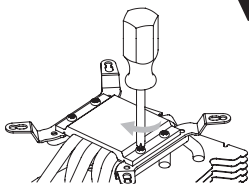
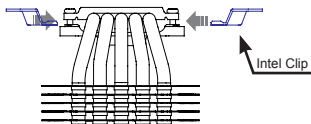
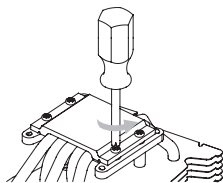
Zalman recommends installing the cooler so that the air channeled through the cooler exits through the rear of this case as shown below.



## 5. Installation

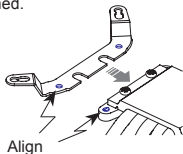
### 1) Intel Socket 1156/775 and Socket 1366 Installation

- ① Unfasten the cooler base's Bolt's one thread, insert the Intel Clips between the cover and base and refasten the Bolts.

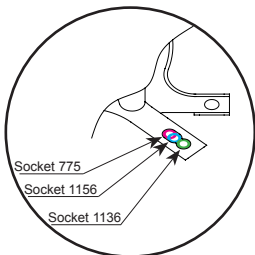
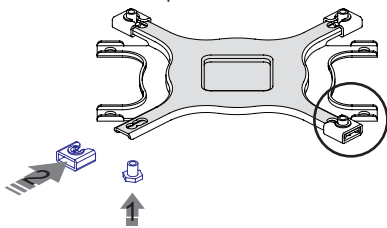


#### ⚠ Caution

Make sure the Intel clip's holes and the base cover protrusion's holes are aligned.

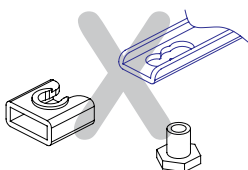
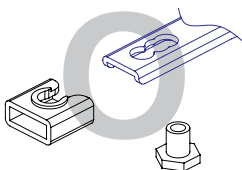


- ② Insert the Nuts to the Backplate according to the Socket type and fix with the Side Caps.



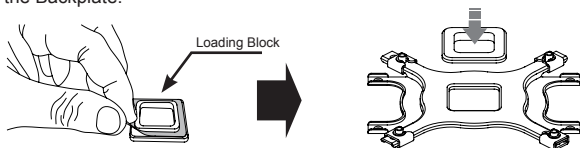
#### ⚠ Caution

Please note the direction of the Nuts and Side Caps.

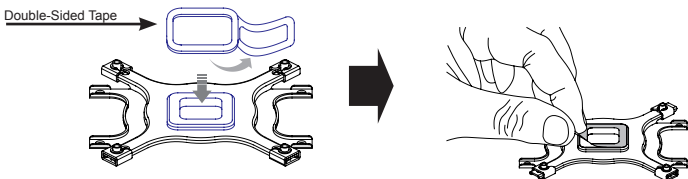


## ③ - a Socket 775

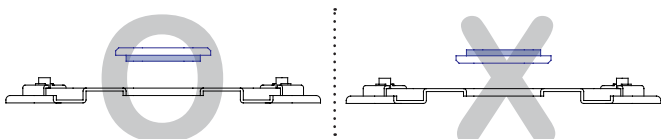
Remove the tape covering film from the Loading Block's surface and attach to the Backplate.



Attach Double-Sided Tape to the installed Loading Block and remove the other side's cover.

**Caution**

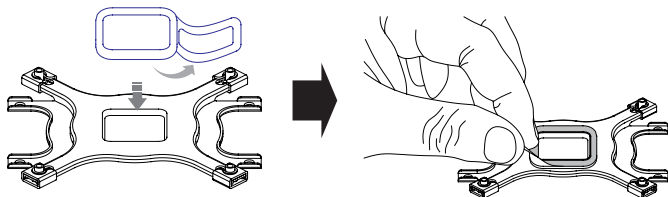
Please make note of the Loading Block's direction.



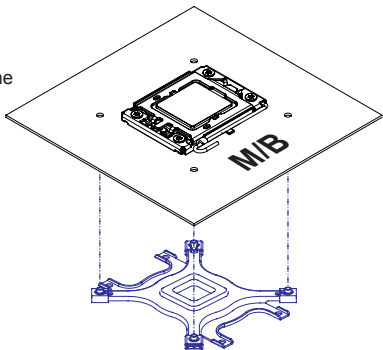
## ③ - b Socket 1156/1366

Attach the Double-Sided Tape to the center of the Backplate and remove the cover on the other side.

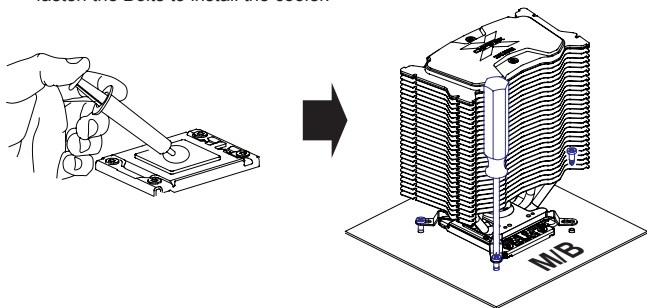
✖ Sockets 1156/1366 do not use the Loading Block.



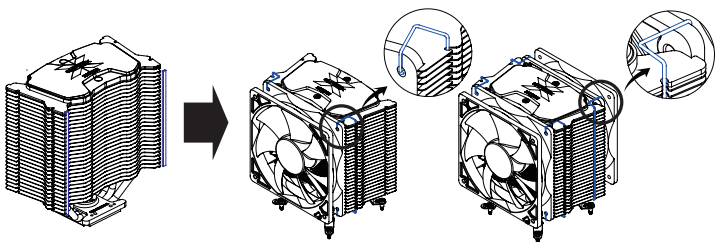
- ④ Align the Backplate's Nuts to the motherboard Clip Support's holes and attach the Backplate to the backside of the motherboard.



- ⑤ Spread about 1/3 of the included Thermal Grease on the CPU and the fasten the Bolts to install the cooler.

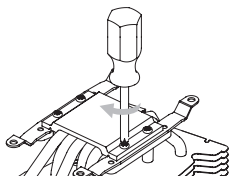
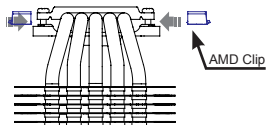
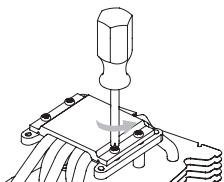


- ⑥ Attach the Vibration Pads to the cooler and use the Fixing Clips to install one or two fans.



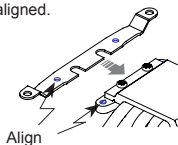
## 2) AMD Socket AM3/AM2+AM2/754/939/940 Installation

- ① Unfasten the cooler base's Bolt's one thread, insert the AMD Clips between the cover and base and refasten Bolts.

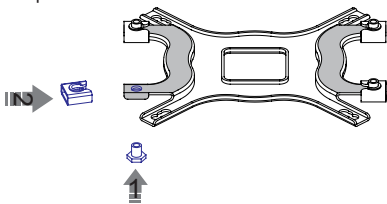


**Caution**

Make sure the AMD clip's holes and the base cover protrusion's holes are aligned.



- ② Insert the Nuts to the Backplate according to the Socket type and fix with the Side Caps.



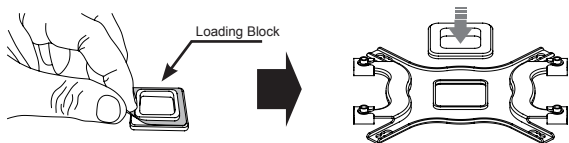
**Caution**

Please note the direction of the Nuts and Side Caps.

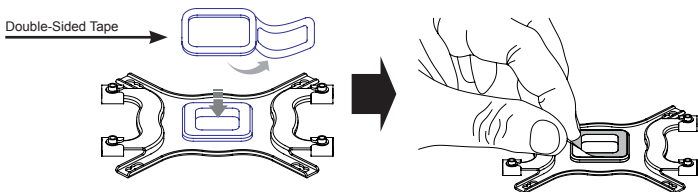




- ③ Remove the tape covering film from the Loading Block's surface and attach to the Backplate.

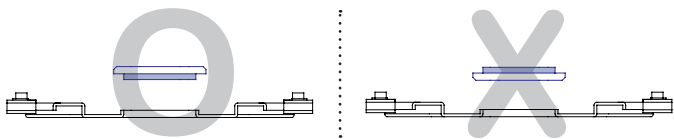


Attach the Double-Sided Tape to the installed Loading Block and remove the other side's cover.

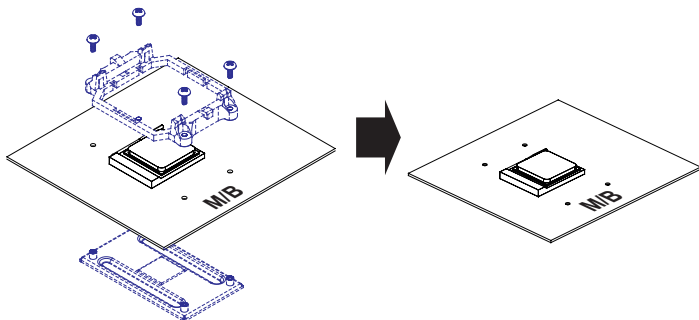


### Caution

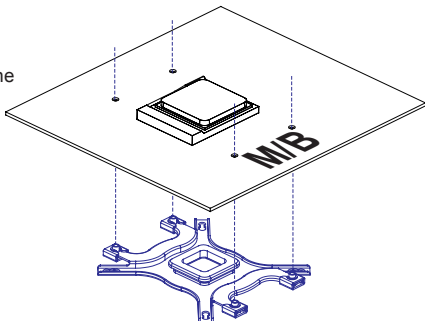
Please make note of the Loading Block's direction.



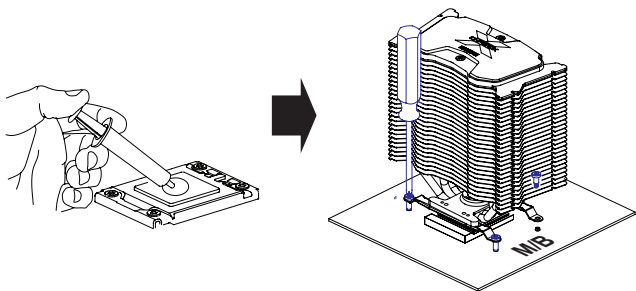
- ④ Remove the Clip Support attached to the motherboard.



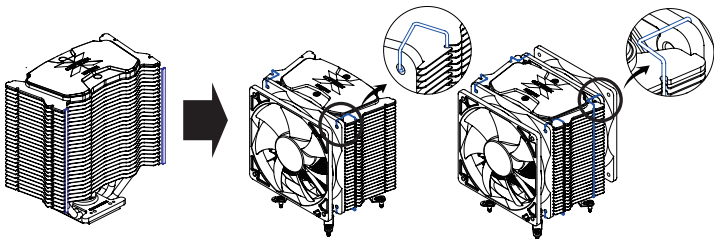
- ⑤ Align the Backplate's Nuts to the motherboard Clip Support's holes and attach the Backplate to the backside of the motherboard.



- ⑥ Spread about 1/3 of the included Thermal Grease on the CPU and the fasten the Bolts to install the cooler.



- ⑦ Attach the Vibration Pads to the cooler and use the Fixing Clips to install one or two fans.



## GS1000 / GS1000SE

- E-ATX / Standard ATX / microATX Compatible
  - \* Supports Intel Dual Xeon server motherboards
- UP to 6 Hot Swap HDD Bays
  - \* GS1000(3 Standard / 3 Optional)
  - \* GS1000 SE(Optional)
- Tool-Free HDD Installation
- Airflow Optimized Design
- Vibration Absorbing HDD Dampers and Feet
- The World's First Roller Rails for Smooth & Easy PSU Installation
- Cable Compartment Behind the Motherboard for Cable Management
- Dedicated Fan Compartment for Fanless PSU Users
- Up to a Total of 8 HDD Bays
  - \* 2 Adaptors & Bezels included for use of two 5.25" bays as 3.5" Internal(HDD)/ External(FDD) Bays



## GT1000

- High-End Gaming Enclosure Built with Sturdy All Aluminum Panels
- Three Tool-Free Hinged Magnetic Panels (2 Left, 1 Right) for Easy Installation and Access to Components
- Tool-Free Installation of Disk Drives, Fan Controlles, Audio Interfaces etc.
- Accommodates up to 6 Hard Drives
- Luxurious and Cool Aesthetics.
- Color Option: Black (Red LED Fans), Titanium (Blue LED Panel).



For more information, please visit our website.